



A sister rig, the Nautilus, being transported on a Heavy-Lift vessel



L and R, the Deepwater Horizon on location in better days





Taken shortly after the rig caught fire – the mast is still there







The drilling mast has toppled over here – they usually melt pretty fast when fire breaks out



Support vessels using their fire fighting gear to cool the rig





From about 10 miles away – dawn of Day 1



Support vessels using their fire fighting gear to cool the rig – note the list developing





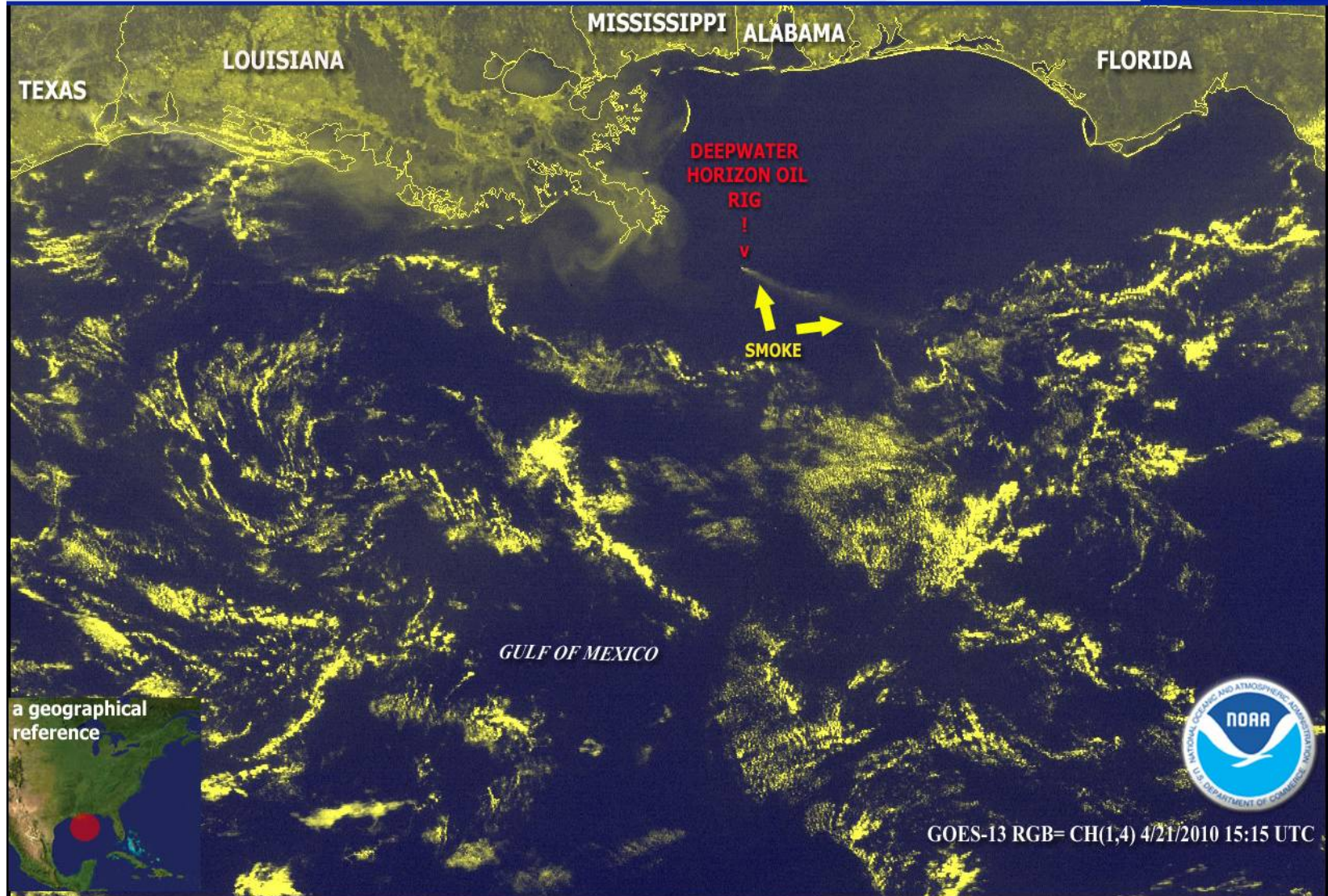


About noon Day 1 – List is pronounced now



Smoke from the Deepwater Horizon Oil Rig can be seen in this GOES-13 satellite image taken at 1515 UTC on April 21, 2010. Twelve people were missing and seven critically injured after an explosion and fire occurred around 10pm last night at the oil-drilling rig located about 41 miles off the Louisiana coast. The Coast Guard is still searching for the missing people.

Credit: NOAA



From a satellite, overhead



Early morning Day 2 – Note the hole burned through the aluminum helideck





Day 2, morning – settling quite low in the water now – fuel and oil slick forming



22 14:50







NATIONAL

22 17:09



22 17:20





22 17:24